

the

# Peter A. Krusch Nature Preserve

316 North  
Cambridge Road,  
Cambridge VT

## WELCOME

The Town of Cambridge's Peter A. Krusch Nature Preserve is a publicly accessible nature preserve where people of all ages can explore the natural world. The Preserve's diverse habitats provide space for forest and wildlife, and opportunities for people to enjoy peaceful recreation and contemplation. Outdoor activities can be enjoyed on foot in all seasons. The Preserve provides opportunities for people of all ages to enjoy varied, rich habitats where plants and wildlife thrive and improved access to the Cambridge Pines State Forest / Natural Area.

The Town of Cambridge acquired the 51-acre Peter A. Krusch Preserve in December 2020. The land was owned and stewarded for 60 years by Peter A. Krusch (1931-2018), who had always envisioned the land preserved and open to the public. A three-year cooperative effort between the Town of Cambridge, the Cambridge Conservation Commission, the Vermont Land Trust, and Sally Laughlin, widow of Peter Krusch, resulted in the creation of the Preserve in his memory.

*"...wending through a meadow,  
past a waterfall and gorge,  
along and across Dragon Brook  
until it reaches the border of  
the ancient pines and  
hemlocks of the Cambridge  
Pines State Forest."*

## SUPPORT

Volunteers are needed for trail maintenance. Contact Liam Kearney at [Trails@KruschNaturePreserve.org](mailto:Trails@KruschNaturePreserve.org).

Nature walks and school programs are available. Contact Mary Fiedler at [Events@kruschnaturepreserve.org](mailto:Events@kruschnaturepreserve.org).

Donations are welcome, both for operating expenses and future endowment. Contact Sally Laughlin at [chair@kruschnaturepreserve.org](mailto:chair@kruschnaturepreserve.org).

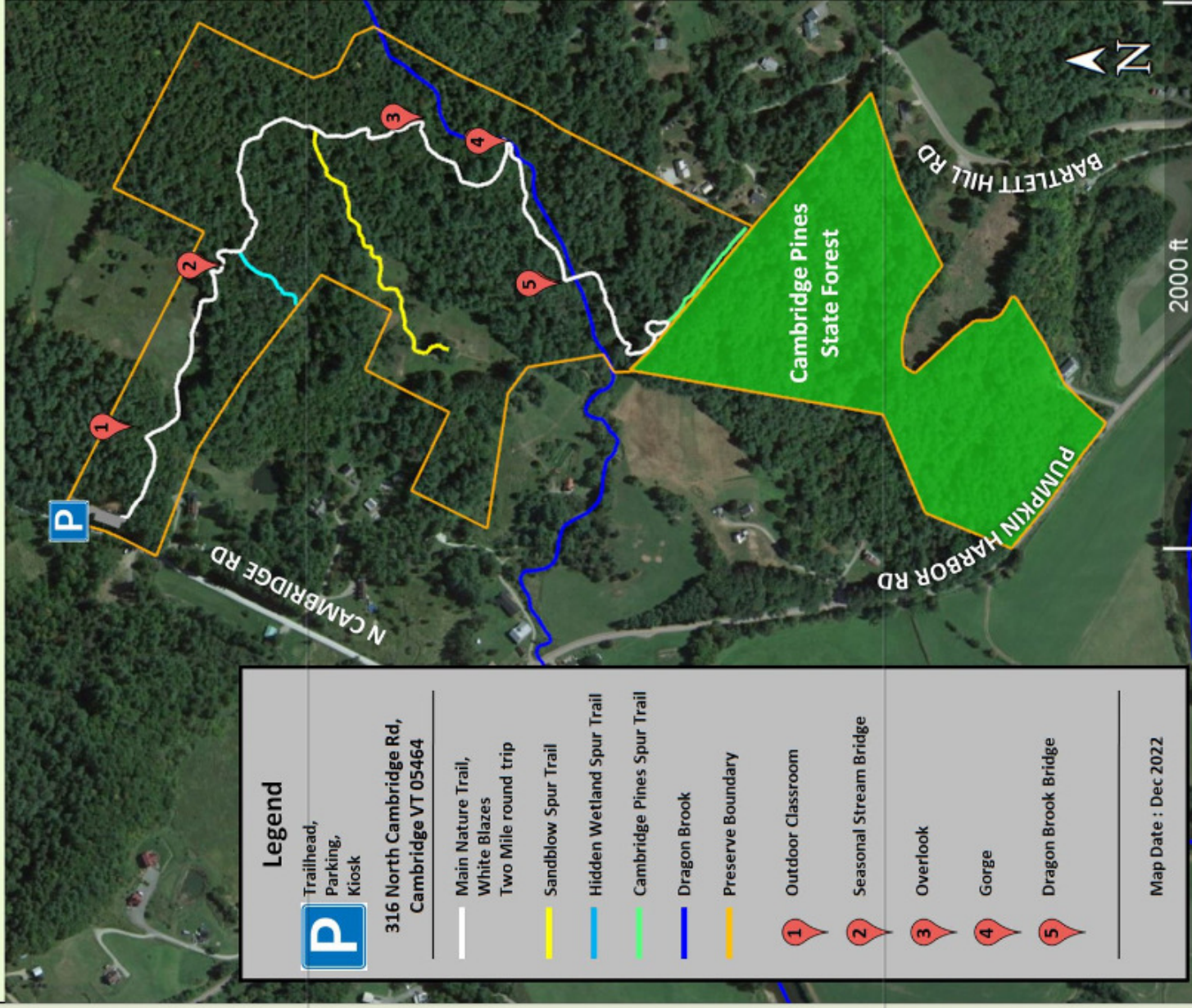
Donations to the Krusch Preserve can be made via check to the Town of Cambridge, noting "for the Krusch Preserve." Checks can be sent to the Town Clerk of the Town of Cambridge at P.O. Box 127, Jeffersonville, VT 05464.

To learn more or to see the schedule of nature walks scan the code below or visit [KruschNaturePreserve.org](http://KruschNaturePreserve.org).



# The Town of Cambridge, Vermont

## Krusch Nature Preserve Trails



*The Preserve is a compelling mix of forestland, open meadow, wetlands, ravines, and waterfalls mapped by the state of Vermont as a "Priority Connectivity Block," providing critical ecological connectivity on a statewide level.*